



ECB70 | ECB80

SERVICE MANUAL

< SM-ECB70/802019001-EN >



BYD FORKLIFT

This manual is used for authorized personnel to service BYD forklifts



TABLE OF CONTENTS

INTERVAL, ITEM AND AUXILIARY MATERIAL

Daily Maintenance

Period and Items	6
Content Description	6

Regular Maintenance

Period and Items	9
Content Descriptions	9

Auxiliary Material

Type and Parameters of Auxiliary Material	10
---	----

CHASSIS SYSTEM MAINTENANCE

Steering Column

Descriptions	11
Steering Column Removal and Installation	12
Steering Column Overhaul	13

Steering Axle

Descriptions	15
Steering Axle Wheel Bearing Service	15

Drive Axle

Gear Oil Replacement	17
----------------------	----

Wheel and Tire

Appearance Check	17
Wheel Removal and Mounting	18
Tire Replacement	18

MAST MAINTENANCE

Chain

2-Stage Standard Mast Chain Adjustment	19
3-Stage Free Lift Mast (4 Cylinders) Chain Adjustment	19

Lift Cylinder

Lift Cylinder Air-Exhausting	21
Lift Cylinder Rod Lubrication	21
Lift Cylinder Shimming Adjusting	21

Mast and Carriage

Description of Mast and Carriage Roller	22
Carriage and Mast Clearance Adjustment	24
Carriage Removal and Installation after Mast Removal	25
Mast and Carriage Roller Replacement	25

OTHER INFORMATION

Contact Information	28
---------------------	----



Daily Maintenance

Period and Items

Daily (or every 8 hours) and weekly (or every 40 hours) for daily inspection items, whichever comes first. For example, if daily working hours are less than 8 hours per day, conduct the inspection and checks on a daily basis. If daily working hours exceed 8 hours, conduct the inspection and checks every 8 hours.

Inspection checklist:

No.	Items	1 day	1 week
		8h	40h
1	Forklift Exterior	Check	
2	Tires	Clean and tighten	Clean and tighten
3	Mast	Check	
4	Hydraulic System	Check	
5	Seat	Check	
6	Display	Check	
7	Warning Equipment	Check	
8	Braking System	Check	Check
9	Driving, Steering and Controlling	Check	
10	Electric System		Check
11	Counterweight	Check	
12	Clean		Clean
13	Others	Check	

Note

- (1)These inspections should be conducted before operating the forklift.
- (2)Before conducting the daily inspection, recheck for any fault and error found earlier.

Content Description

1.Forklift Appearance

- (1)Check the forklift body for damage and deformation.
- (2)Check the floor where the forklift is parked for oil leakage.
- (3)Check whether nameplate, loading capacity chart and warning decals and signs are complete.

Note

If oil leakage occurs, confirm the location of the oil leakage and contact the BYD after sales service

2.Tires

- (1)Check if the wheel fasteners are secured or loose. Fasten them if they are loose
- (2)Take out debris embedded in the tire.
- (3)If the four tires are unevenly worn, or the tires are found damaged, or the rims are bent, then replace the tires.

3.Mast

- (1)Check the cylinders, oil pipes, and hoses on working equipment for oil leakage.
- (2)Check the working equipment for deformation and damage. Check if the bolts are securely fastened.

Note

If oil leakage occurs, confirm the location of oil leakage and contact the BYD after sales service.

4.Hydraulic System

- (1)Check the hydraulic oil level in the oil tank.
- (2)Check the state of the filter indicator.

5.Seat

- (1)Pull the seat belt fully out and check for fraying.
- (2)Check the locking device (belt buckle) of the seat belt, and check if the retractor functions properly.
- (3)Check if the seat can be adjusted forward and backward, and if the back rest angle and seat suspension can be adjusted.

Danger

In the case of seat belt failure, stop operating the forklift and replace the seat belt.

6.Display

- (1)Check if the battery voltage and status of charger displayed are correct.
- (2)Check if any error/fault indicator appears on the display.
- (3)Set the direction control switch to "forward" , "neutral" and "reverse" and check if corresponding indicator appears
- (4)Check if the turning indicator signs appear when the turning indicator is activated.
- (5)Check if the 3 control buttons on the display functions properly.



7.Warning Equipment

- (1)Check if working lights work properly.
- (2)Check if turning lights work properly.
- (3)Set the gear to "Reverse" and check if reversing lights work and reversing beeper sound
- (4)Press horn to see if it works.
- (5)Check if other warning equipment work properly.

8.Braking System

- (1)Fully depress and then release the braking pedal and check if there is any abnormality.
- (2)Check if the parking brake works properly when it is applied. Check the operating force needed to fully apply the parking brake. Check for abnormal wear on the parking brake.
- (3)Check the braking fluid level.

9.Driving, Steering and Operating

- (1)Turn the steering wheel clockwise and anti-clockwise and check if the steering is smooth.
- (2)Operate the mechanical levers and check if lifting and tilting are smooth.
- (3)Depress the acceleration pedal to see if the forklift can accelerate normally.
- (4)Check for abnormal sounds during forklift operation.

10.Electric System

- (1)Check the electrical wiring of the forklift.
- (2)Check the fuse and relay.
- (3)Check the main controller.

11.Counterweight

- (1)Check the counterweight bolts.
- (2)Check the tow pin.

12.Clean

- (1)Clean the forklift.

13.Others

- (1)Check if there are other problems.

Regular Maintenance

Period and Items

Period for regular inspection and maintenance, whichever comes first. For example, if the vehicle works less than 250 hours in 6 weeks, conduct the following inspection and checks every 6 weeks, otherwise conduct the following inspection and checks every 250 hours. Perform the maintenance service accordingly

Category	Items	6 weeks	3	6	12	Months
		250	500	1000	2000	
Chassis System	Steering Axle	Lubrication				
	Braking Fluid			Replacement		
	Gear Oil Replacement	1st replacement		Replacement		
Mast	Chains Adjustment	Check				
	Lift Chains Lubrication	Lubrication				
	Mast Cleaning	Clean				
	Mast Lubrication	Lubrication				
Hydraulic System	Hydraulic Oil Replacement of Main Oil Tank				Replacement	
	Hydraulic Oil Replacement of Tilt Mechanism			Replacement		
	Return Filter Element Replacement		1st replacement	Replacement		
	High Pressure Filter Element Replacement		1st replacement	Replacement		
	Return Filter's Air Filter Replacement				Replacement	
Electric System	Electric System		Check			
	Others	Torque on Critical Fasteners Check		Check		

Note

If the working environment is harsh, the maintenance interval should be reduced, and advice from BYD after sales personnel should be sought.

Content Descriptions

1.Chassis System

- (1)Lubricate the drive axle.
- (2)Replace the brake fluid.
- (3)Replace the gear oil.

2.Mast

- (1)Check the tightness of the chain and adjust if necessary.
- (2)Lubricate the chains.
- (3)Clean the mast.

3.Hydraulic System

- (1)Replace hydraulic oil regularly.
- (2)Replace return filter element
- (3)Replace high pressure filter element
- (4)Replace air filter

4.Electric System

- (1)Check the electrical wiring of the forklift.
- (2)Check fuse and relay.
- (3)Check the main controller.

5.Others

- Check torque on critical fasteners



AUXILIARY MATERIAL

Type and Parameters of AUXILIARY MATERIAL

Items	Category	Volume Needed	Type
Gear Oil Replacement	Gear Oil	As Needed	Mobil Fluid 424
Hydraulic Oil Replacement Of Main Oil Tank	Hydraulic Oil	130L	ISOVG46(≤ 46 ° C) , ISOVG68(≤ 68° C)
Hydraulic Oil Replacement Of Tilt Mechanism	Hydraulic Oil Used For Planes	As Needed	10#
Braking System	Braking Fluid	As Needed	DOT4
Mast Lubrication	Lithium Lubrication Grease	As Needed	EP2
Steering Axle	Lithium Lubrication Grease	As Needed	EP3
Lift Chains Lubrication	Machine Oil	As Needed	20#(Winter), 40#(Other seasons)

Note

The given quantities are maximum values and take the actual quantities as the standard.



CHASSIS SYSTEM MAINTENANCE

This chapter explains how to maintain chassis system.

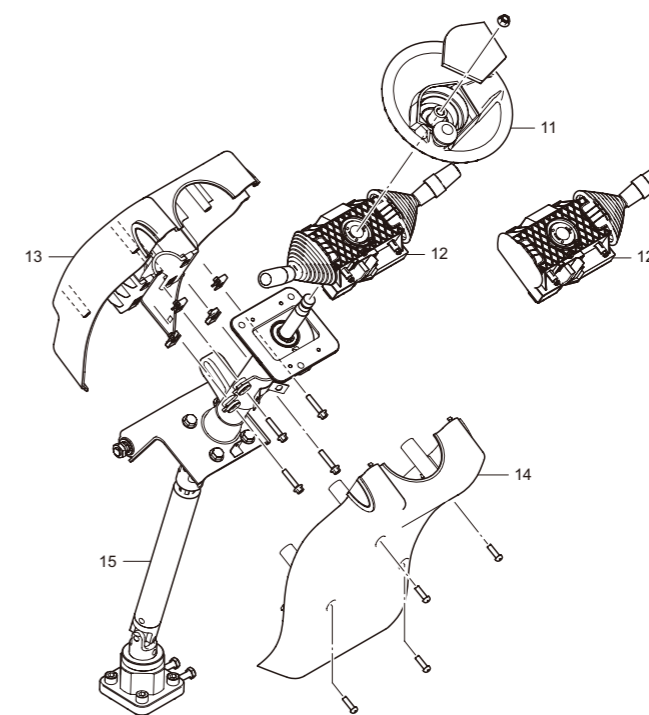
Steering Column

Descriptions

The switch assy (basic or comfort) is fixed between the steering shaft assembly and the steering wheel

Connected to the bottom of the steering shaft assembly, the steering control unit is operated by the steering wheel, which is supplied with oil pressure from the main hydraulic pump and directs oil flow to the steering cylinder in the steering axle.

The cover and the entire column can be removed for service or replacement.



CODE	PART NAME	QTY	INFORMATION	CODE	PART NAME	QTY	INFORMATION
11	STEERING WHEEL	1		13	FRONT STEERING COLUMN COVER	1	
12	SWITCH ASSY (BASIC)	1		14	REAR STEERING COLUMN COVER	1	
12	SWITCH ASSY (COMFORT)	1		15	STEERING SHAFT ASSEMBLY	1	

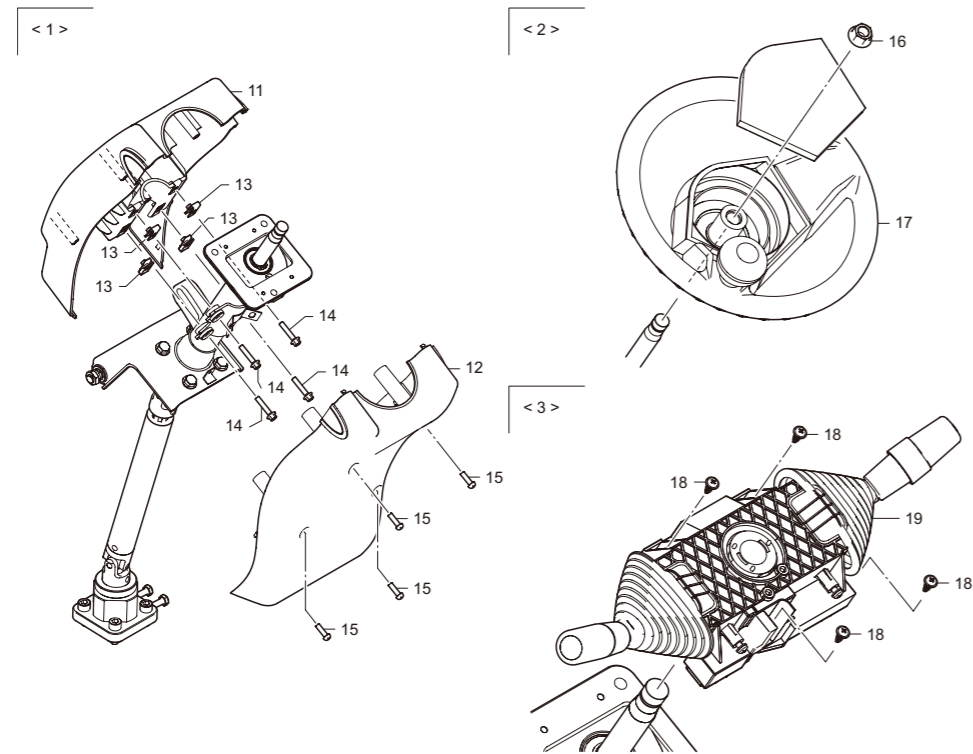
Steering Column Removal and Installation

1. Cover, Steering Wheel and Switch Assembly Removal

(1) Loosen 4 screws in the Rear Steering Column Cover and remove them. Loosen 4 bolts to remove the Front Steering Column Cover (4 clip nuts don't need to be removed).

(2) Open the cover of the steering wheel, loosen the nut, and remove them.

(3) Loosen 4 screws to remove the switch assembly.



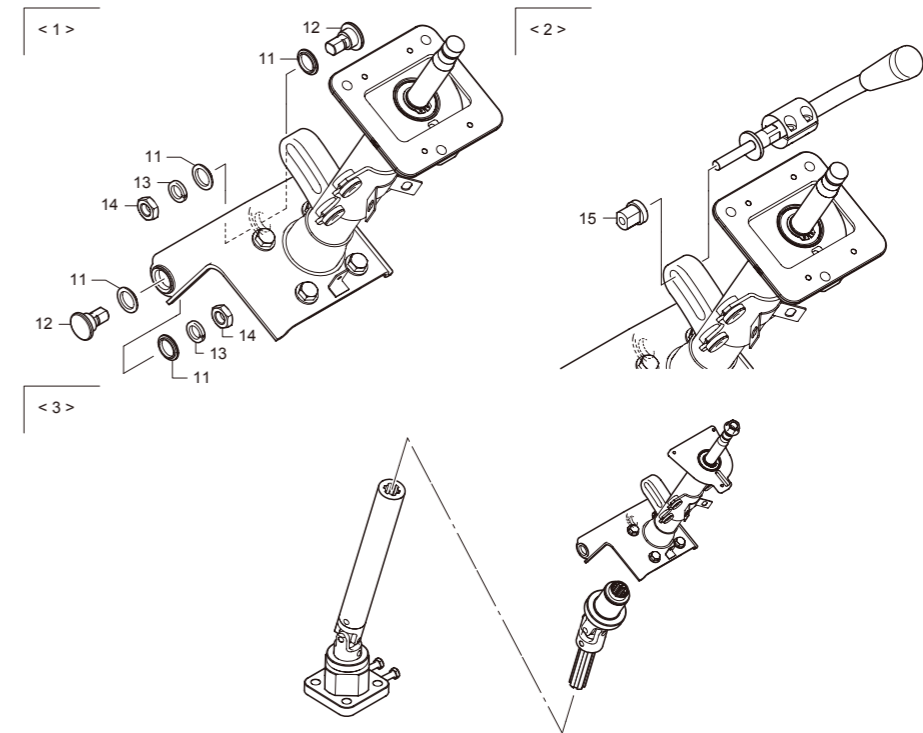
CODE	PART NAME	QTY	INFORMATION	CODE	PART NAME	QTY	INFORMATION
11	FRONT STEERING COLUMN COVER	1		16	HEXAGON FLANGE NUT M12	1	
12	REAR STEERING COLUMN COVER	1		17	STEERING WHEEL	1	
13	CLIP NUT M6	4		18	SCREW M5×14	4	
14	BOLT M6×30	4		19	SWITCH ASSY (BASIC)	1	
15	SCREW M6×20	4					

2. Steering Column Removal

(1) Loosen nuts on the steering column.

(2) Loosen the insert nut

(3) Remove them



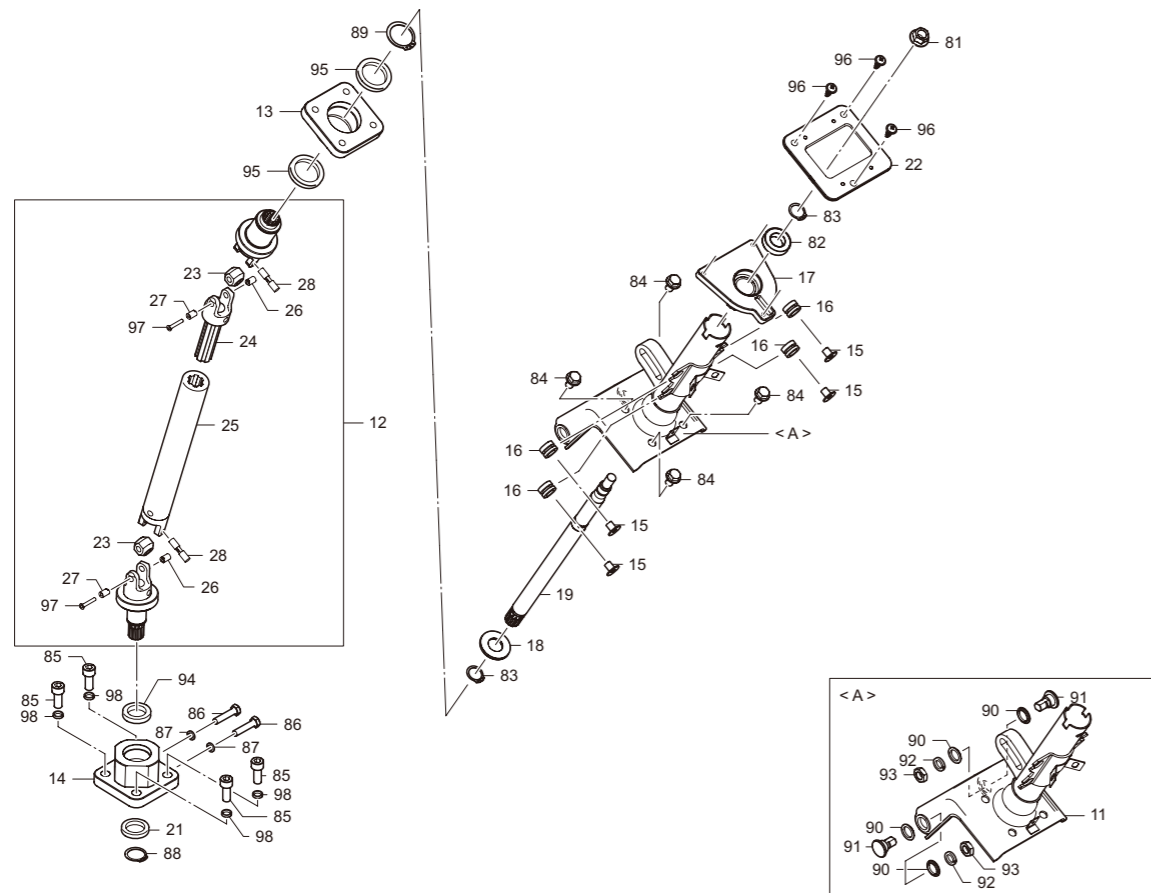
CODE	PART NAME	QTY	INFORMATION	CODE	PART NAME	QTY	INFORMATION
11	FLAT WASHER	4		14	FLAT NUT	2	
12	FLAT ROUND BOLT	2		15	NUT	1	
13	SPRING WASHER	2					

3. Steering Column, Cover, Steering Wheel and Switch Assembly Installation

Follow the steps in reverse to install Steering Column, Cover, Steering Wheel and Switch Assembly.

Steering Column Overhaul

Use the picture of the explosive view as the guide to overhaul the steering column.



CODE	PART NAME	QTY	INFORMATION	CODE	PART NAME	QTY	INFORMATION
11	STEERING BRACKET	1		82	BALL BEARING	1	
12	CARDAN SHAFT ASSY	1		83	CIRCLIP	2	
13	TOP FLANGE	1		84	HEXAGON FLANGE BOLT M10×16	4	
14	BOTTOM FLANGE	1		85	SCREW M10×35	4	
15	INSERT	4		86	BOLT M8×35	2	
16	RUBBER	4		87	SPRING WASHER M8	2	
17	SUPPORT PLATE	1		88	CIRCLIP	1	
18	WASHER	1		89	CIRCLIP	1	
19	INNER SHAFT	1		90	FLAT WASHER	4	
21	WASHER	1		91	FLAT ROUND BOLT	2	
22	SUPPORT PLATE	1		92	SPRING WASHER	2	
23	JOINT	2		93	FLAT NUT	2	
24	SPLINE ROD	1		94	BALL BEARING	1	
25	SPLINE COLUMN	1		95	BALL BEARING	2	
26	PIN	2		96	SCREW M4.8×19	3	
27	HOLLOW PIN	2		97	SCREW M4×25	2	
28	SLOTTED PIN	2		98	SPRING WASHER M10	4	
81	HEXAGON FLANGE NUT M12	1					

Steering Axle

Descriptions

The steering axle has the steering cylinder, knuckles, and links mounted on it. All these components can be removed, serviced, and replaced.

The steering control unit at the base of the steering column directs hydraulic oil to one end or the other of the steer cylinder to pivot the steer wheels.

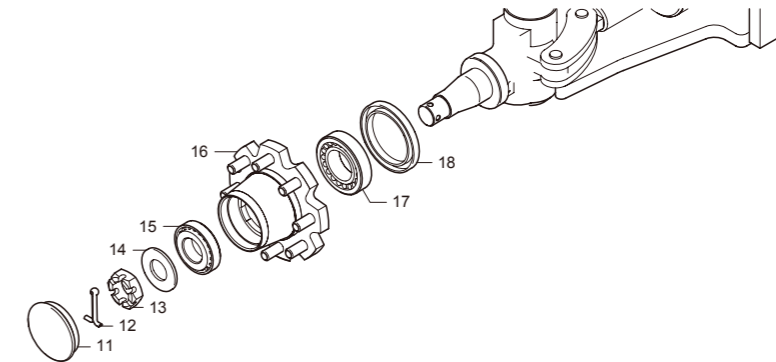
The steer axle is bolted to the truck frame. The steer cylinder is connected to the steering knuckles by links.

All bearings used in the steer axle linkage have lubrication fittings and are serviceable.

Steering Axle Wheel Bearing Service

1. Bearing Disassembly

- (1) Remove the Wheel.
- (2) Open the dust cap, remove the split pin, the castle nut and washer.
- (3) Pull off the hub from the knuckle. Support the hub to avoid dragging the grease seal at the back side across the thread on spindle end.
- (4) Clean the old grease out of center of the hub.
- (5) Lay the hub down with outer edge up (support hub on blocking), and then remove the inner bearing cone and grease seal.
- (6) Clean and inspect the bearing cups and cones for wear or other damage. Replace them as a set if necessary.
- (7) Inspect grease seal for wear and damage. Replace as necessary. It is recommended to install a new grease seal whenever old ones are removed.
- (8) Use a standard puller to remove bearing cups from hub if bearings require replacement.



CODE	PART NAME	QTY	INFORMATION	CODE	PART NAME	QTY	INFORMATION
11	DUST CAP	1		15	TAPERED BEARING	1	
12	SPLIT PIN	1		16	HUB	1	
13	CASTLE NUT	1		17	TAPERED BEARING	1	
14	WASHER M30	1		18	SEAL	1	

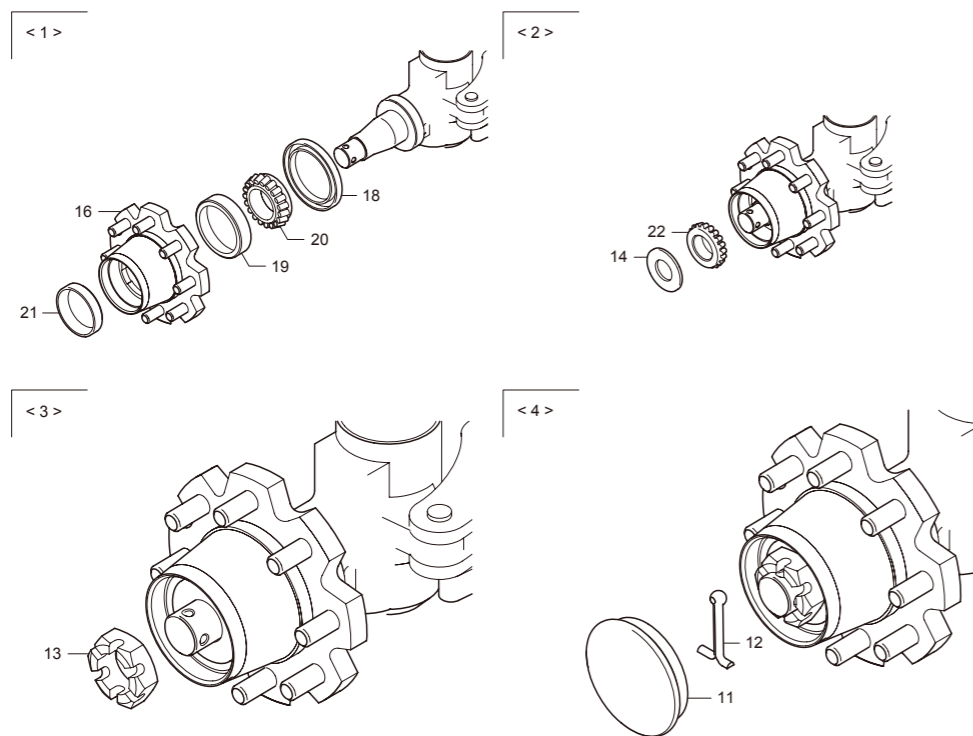
2. Bearing Reassembly

(1) Press new bearing cups into the hub and ensure cups being seated correctly. Pack the bearings with grease and install the inner bearing. Pack cavity between bearing and seal half full with grease. Apply coating of grease to inside diameter of seal lips prior to assembly, then install seal in hub.

(2) Install the hub on knuckle carefully to avoid damage grease seal lip when moving the hub over the end of spindle and threads. Pack cavity in hub between bearings one-half full with grease. Install the outer wheel bearing after it has been packed with grease, and then install the washer

(3) Install the castle nut, tighten it, and then unscrew it by 1/8~1/6 turn. Recheck for correct bearing adjustment by rotating the hub by hand. The hub should rotate free. Readjust bearings by adjusting the castle nut as necessary to avoid binding in bearings.

(4) Install the split pin, pack the area around castle nut with grease, and then install the dust cap.



CODE	PART NAME	QTY	INFORMATION	CODE	PART NAME	QTY	INFORMATION
11	DUST CAP	1		18	SEAL	1	
12	SPLIT PIN	1		19	BEARING CUP	1	
13	CASTLE NUT	1		20	INNER BEARING	1	
14	WASHER M30	1		21	BEARING CUP	1	
16	HUB	1		22	INNER BEARING	1	

Drive Axle

Gear Oil Replacement

Run the forklift until the driving axle gets lightly heated. Park the forklift on a level floor, apply the hand brake, switch off the forklift, remove the key and press down the emergency disconnect switch.

Lift the forklift with jack and secure the wheels with wedges. Remove the wheels.

(1) Clean the surrounding areas around the oil drain plug, oil filler plug and oil dipstick plug. Place a container below the oil drain plug.

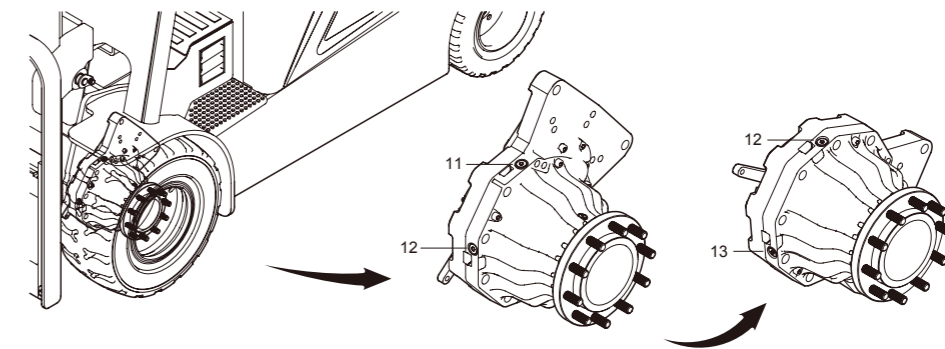
(2) Remove oil drain plug, oil filler plug and oil dipstick plug and drain all the gear oil.

(3) Put the oil drain plug back on and tighten it.

(4) Add the gear oil through oil filler hole until the gear oil overflows out of oil dipstick plug.

(5) Tighten both oil dipstick plug and oil filler plug.

(6) Refit the wheel and replace the gear oil in the driving axle on the other side.



CODE	PART NAME	QTY	INFORMATION	CODE	PART NAME	QTY	INFORMATION
11	OIL FILLER PLUG	1	20N-m	13	OIL DRAIN PLUG	1	20N-m
12	OIL DIPSTICK PLUG	1	20N-m				

Wheel and Tire

Appearance Check

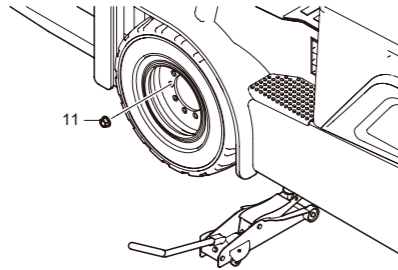
Check the condition of wheels and tires. Remove things imbedded in tires.



Wheel Removal and Mounting

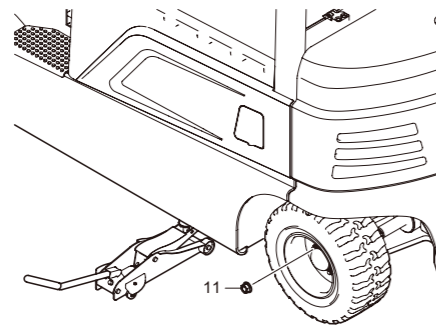
1. Front Wheel Removal and Mounting

- (1) Park the vehicle on the level floor, apply the handbrake, switch off the vehicle, remove the key and press down the emergency disconnect switch.
- (2) Jack up the vehicle until the tires are off the ground and loosen the wheel nuts.
- (3) Remove the wheel nuts and wheels.
- (4) Follow the reverse procedures to install the wheels back on.



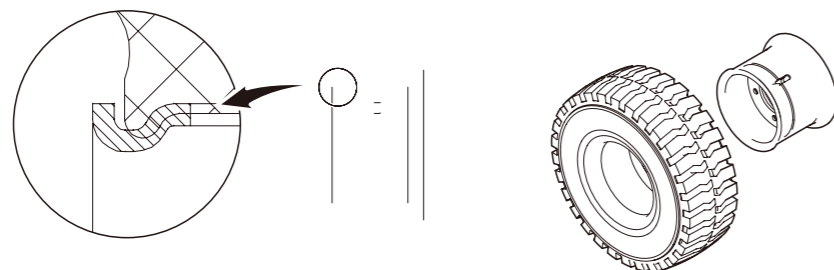
2. Front Wheel Removal and Mounting

- (1) Park the vehicle on the level floor, apply the handbrake, switch off the vehicle, remove the key and press down the emergency disconnect switch.
- (2) Jack up the vehicle until the tires are off the ground and loosen the wheel nuts.
- (3) Remove the wheel nuts and wheels.
- (4) Follow the reverse procedures to install the wheels back on.



Tire Replacement

For this kind of wheel, the tire will be damaged when pulled out the rim, so the tire can only be removed and replaced by machine.



MAST MAINTENANCE

This chapter will explain how to maintain mast.

Chain

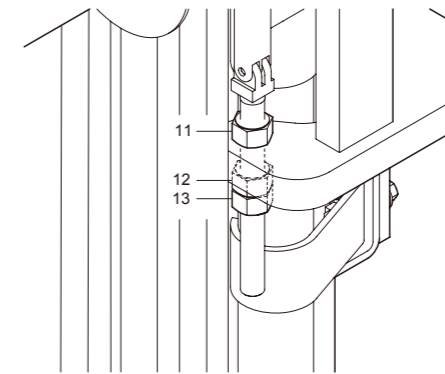
2-Stage Standard Mast Chain Adjustment

The 2-stage standard mast has a main lift chain set that is needed to be adjusted.

No.	Chain	Adjustment Purpose	Requirement
1	Main Lift Chain	Fork-to-Ground Clearance	10~20mm

1. Fork-to-ground clearance adjustment

- (1) Tilt the mast to be on the vertical position, and then fully lower the mast.
- (2) Loosen the upper nut (that some masts have) and the lower nut.
- (3) Screw the middle nut to adjust the chain until it meets the requirement.
- (4) Tighten the upper and lower nuts.



CODE	PART NAME	QTY	INFORMATION	CODE	PART NAME	QTY	INFORMATION
11	NUT	1		13	NUT	1	
12	NUT	1					

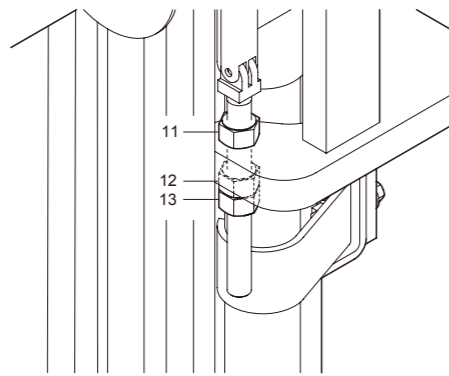
3-Stage Free Lift Mast (4 Cylinders) Chain Adjustment

The 3-stage free list mast (4 cylinders) has a main lift chain set and a free lift chain set that are needed to be adjusted.

No.	Chain	Adjustment Purpose	Requirement
1	Main Lift Chain	Inner Mast Bottom Height	≤ 2mm
2	Free Lift Chain	Fork-to-Ground Clearance	10~20mm

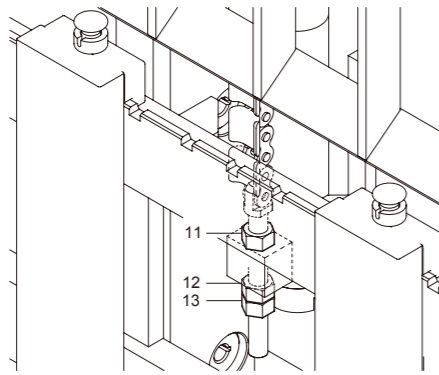
1. Inner mast bottom height adjustment

- (1) Tilt the mast to be on the vertical position, and then fully lower the mast.
- (2) Loosen the upper nut (that some masts have) and the lower nut.
- (3) Screw the middle nut to adjust the chain until it meet the requirement.
- (4) Tighten the upper and lower nuts.



CODE	PART NAME	QTY	INFORMATION	CODE	PART NAME	QTY	INFORMATION
11	NUT	1		13	NUT	1	
12	NUT	1					

- (1)Tilt the mast to be on the vertical position, and then fully lower the mast.
- (2)Loosen the upper nut (that some masts have) and the lower nut.
- (3)Screw the middle nut to adjust the chain until it meet the requirement.
- (4)Tighten the upper and lower nuts.

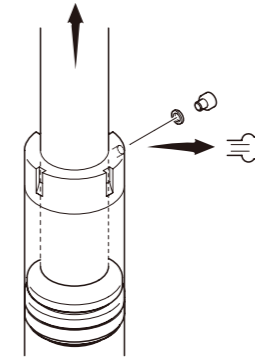


CODE	PART NAME	QTY	INFORMATION	CODE	PART NAME	QTY	INFORMATION
11	NUT	1		13	NUT	1	
12	NUT	1					

Lift Cylinder

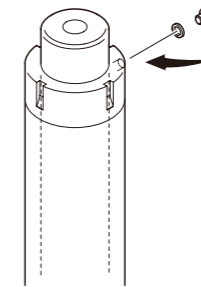
Lift Cylinder Air-Exhausting

- (1)Tilt the mast to be on the vertical position, and then fully lower the mast.
- (2)Remove the screw and washer on the top side of the cylinder.
- (3)Fully lift the lift cylinder to exhaust the air in the cylinder.
- (4)Install the screw and the washer, and then tighten the screw.



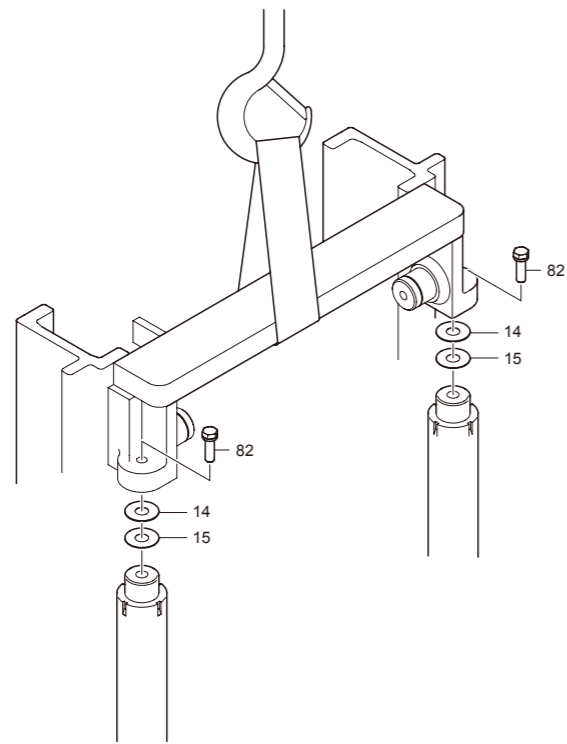
Lift Cylinder Rod Lubrication

- (1)Tilt the mast to be on the vertical position, and then fully lower the mast.
- (2)Remove the screw and washer on the top side of the cylinder.
- (3)Add some hydraulic oil into the cylinder tube to lubricate the cylinder rod.
- (4)After lubrication, exhaust the air in the lift cylinder, install the screw and the washer, and then tighten the screw.



Lift Cylinder Shimming Adjusting

- (1)Lift the mast to find the cylinder rod top of the shorter stroke.
- (2)Tilt the mast to be on the vertical position, and then fully lower the mast.
- (3)Use a reliable hoisting strap to hang the upper beam of the inner mast (2-stage mast) or the middle mast (3-stage mast), and secure the strap with a safety hook.
- (4)Remove the piston rod bolt.
- (5)Slowly lift the hoisting strap to expose both cylinder rod tops.
- (6)Insert several shims over the cylinder rod top of the shorter stroke to achieve equal stroke length.
- (7)Slowly lower the mast back onto the rod tops, and then screw and tighten cylinder rod bolt



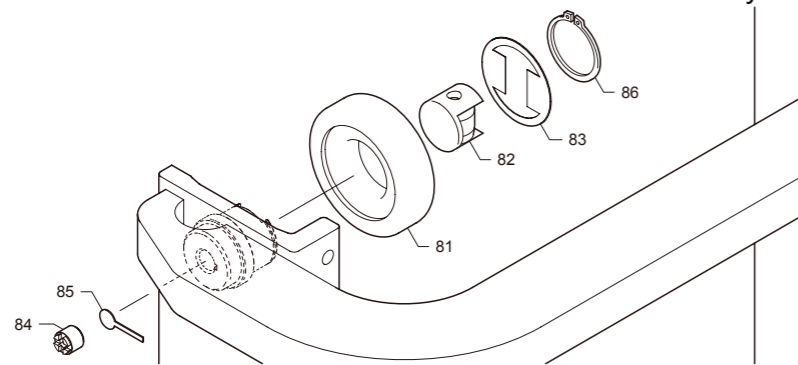
CODE	PART NAME	QTY	INFORMATION	CODE	PART NAME	QTY	INFORMATION
14	SHIM 1mm	2		82	BOLT ASSY M12×40	1	
15	SHIM 0.5mm	1					

Mast and Carriage

Description of Mast and Carriage Roller

1.General Description

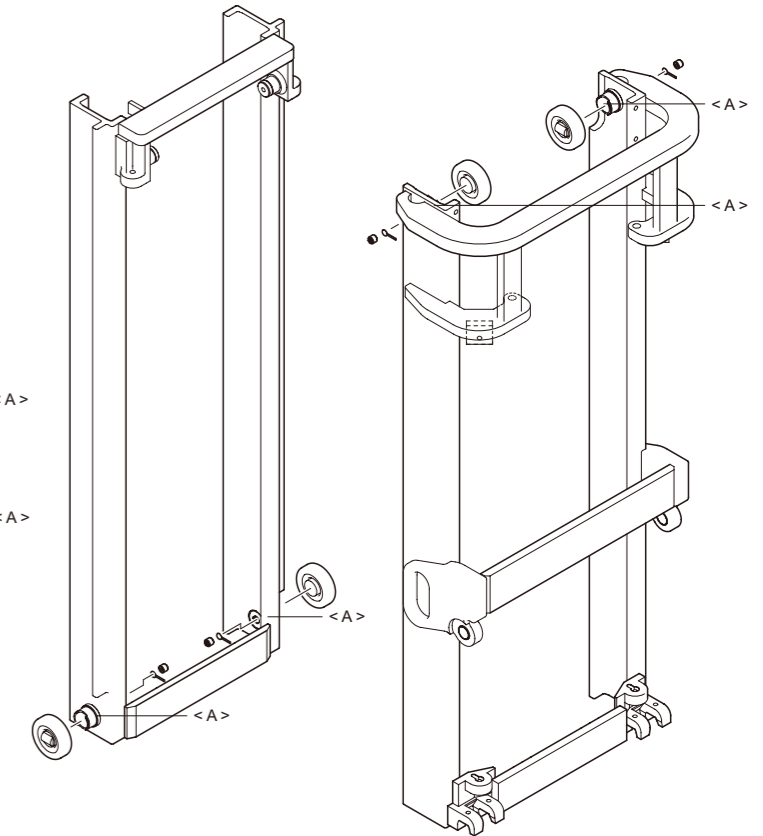
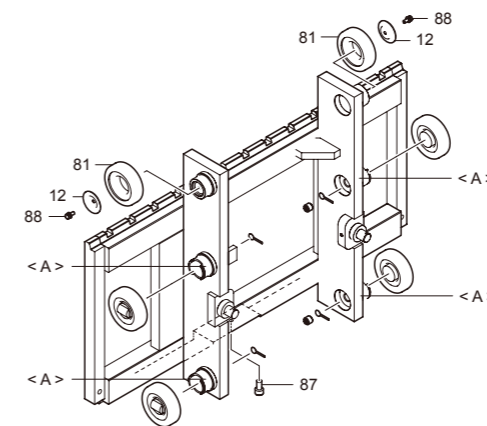
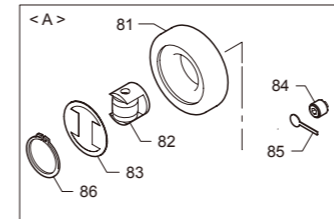
A circlip locks the mast roller, bearing, and the dust protection that are installed on the mast or the carriage stub. The bearing is used to adjust the clearance of the mast and carriage by the adjusting screw, which is installed on the other side of the stub and secured by a secure pin.



CODE	PART NAME	QTY	INFORMATION	CODE	PART NAME	QTY	INFORMATION
81	MAST ROLLER	1		84	ADJUSTING SCREW	1	
82	BEARING	1		85	SECURE PIN	1	
83	DUST PROTECTION	1		86	CIRCLIP	1	

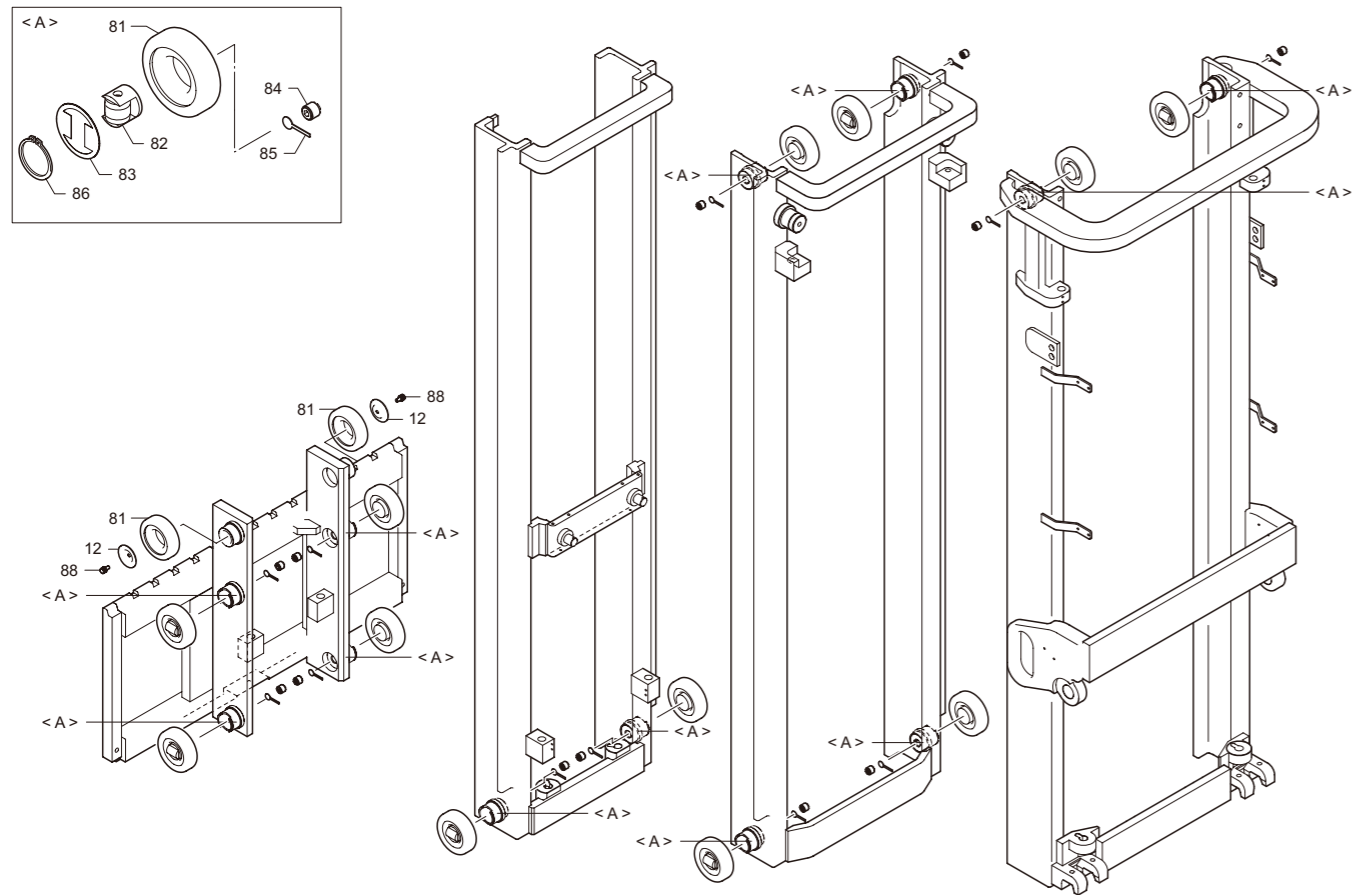
2.2-Stage Mast and Carriage Roller Description

In the 2-stage mast, 2 mast rollers are installed on the top side of the outer mast, 2 mast rollers are installed on the bottom side of the inner mast, and 6 mast rollers are installed on the carriage. Being different from others, the upper 2 mast rollers of the carriage are installed by roller protections and bolts.



CODE	PART NAME	QTY	INFORMATION	CODE	PART NAME	QTY	INFORMATION
12	PROTECTION	2		84	ADJUST SCREW	8	
81	MAST ROLLER	10		85	SECURE PIN	8	
82	BEARING	8		86	CIRCLIP	8	
83	DUST PROTECTION	8		88	BOLT ASSY M8×16	2	

3.3-Stage Mast and Carriage Roller Description

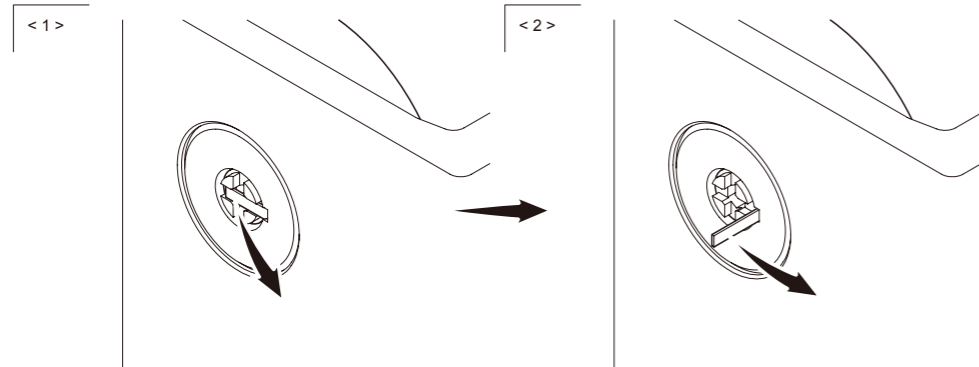


CODE	PART NAME	QTY	INFORMATION	CODE	PART NAME	QTY	INFORMATION
12	PROTECTION	2		84	ADJUST SCREW	12	
81	MAST ROLLER	14		85	SECURE PIN	12	
82	BEARING	12		86	CIRCLIP	12	
83	DUST PROTECTION	12		88	BOLT ASSY M8×16	2	

Carriage and Mast Clearance Adjustment

1.General Carriage and Mast Clearance Adjustment Procedure

- (1)Lift the mast to expose the position of the adjusting screw.
- (2)Bend the secure pin to expose the adjusting screw.
- (3)Use the screw to adjust the clearance.
- (4)After adjustment, bend the secure pin to secure the adjustment screw.

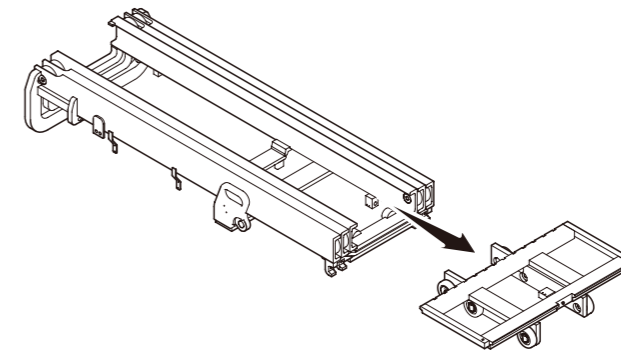


- 2.Order of adjusting 2-stage mast and carriage clearance
 - (1)Clearance between the outer mast and the inner mast.
 - (2)Clearance between the inner mast and the carriage.
- 3.Order of adjusting 3-stage mast and carriage clearance
 - (1)Clearance between the outer mast and the middle mast.
 - (2)Clearance between the middle mast and the inner mast.
 - (3)Clearance between the inner mast and the carriage.

Carriage Removal and Installation after Mast Removal

1.Carriage Removal

- (1)Remove the mast, slowly set the mast down on the flat floor or sturdy pallets.
- (2)Loosen chain nuts to release the carriage.
- (3)Remove the carriage by sliding it out from the bottom of the mast.



2.Carriage Installation

Follow the removal steps in reverse to install the carriage. After installation, adjust the clearance between the carriage and the mast.

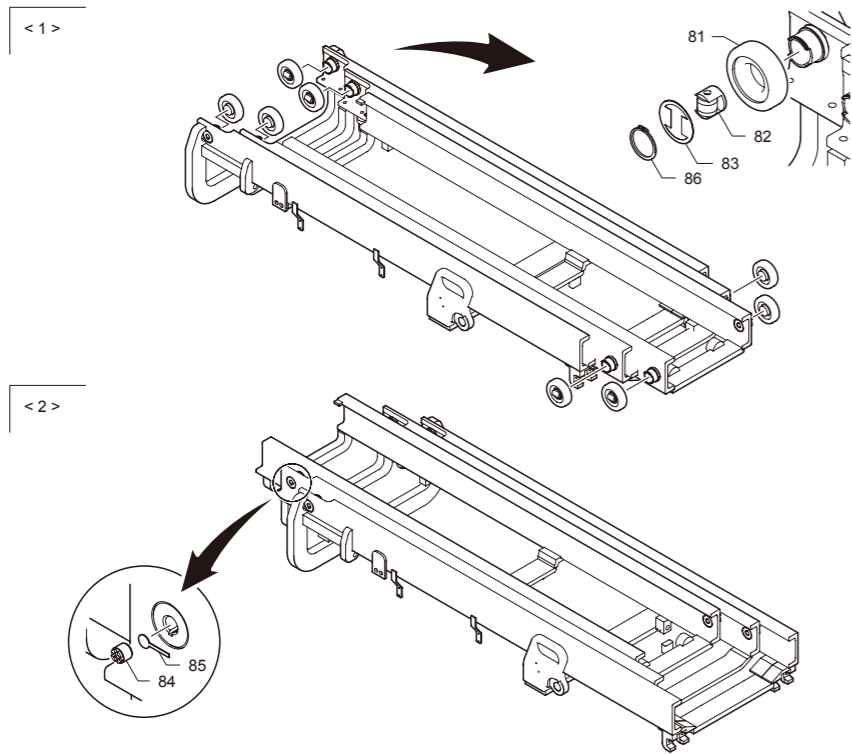
Mast and Carriage Roller Replacement

1.Mast Roller Replacement

Before mast roller replacement, remove the mast, slowly set the mast down on the flat floor or sturdy pallets, and then remove the carriage and cylinders away from the mast.

- (1)Slide the mast in the direction of bottom side of the mast, and then replace mast rollers.
- (2)Slide the mast in the direction of top side of the mast, and then check the adjusting screws and secure pins, replace them if necessary.

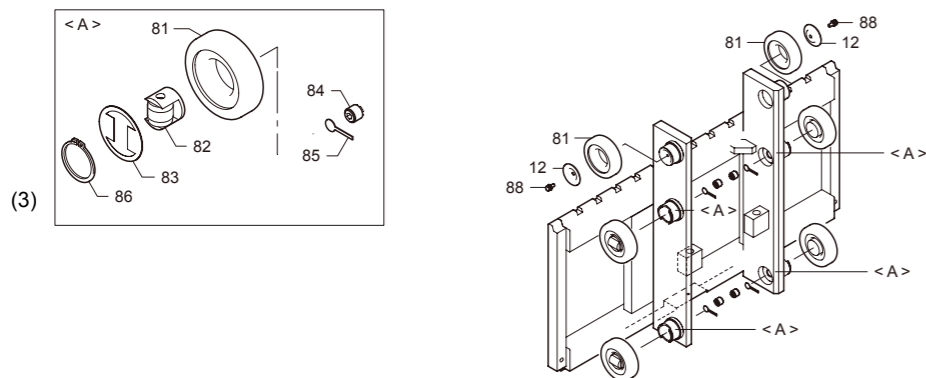
After replacement, adjust the clearance of the mast.



CODE	PART NAME	QTY	INFORMATION	CODE	PART NAME	QTY	INFORMATION
12	PROTECTION	2		84	ADJUST SCREW	4	
81	MAST ROLLER	6		85	SECURE PIN	4	
82	BEARING	4		86	CIRCLIP	4	
83	DUST PROTECTION	4		88	BOLT ASSY M8×16	2	

2.Carriage Roller Replacement

- (1)Check the adjusting screws and secure pins, replace them if necessary.
- (2)Replace carriage rollers.



CODE	PART NAME	QTY	INFORMATION	CODE	PART NAME	QTY	INFORMATION
81	MAST ROLLER	8		84	ADJUST SCREW	8	
82	BEARING	8		85	SECURE PIN	8	
83	DUST PROTECTION	8		86	CIRCLIP	8	



OTHER INFORMATION

Importer: BYD Europe B.V.

Address: s-Gravelandseweg 256, 3125 BK Schiedam, Netherlands

Tel:+31-10-2070888 **Fax:**+31-10-2070880

Importer: BYD Motors Inc.

Address: 1800 South Figueroa Street, Los Angeles, CA, 90015

Tel: 213-748-3980 **Fax:** 213-748-3945

E-mail: FORKLIFTSERVICE@BYD.COM

Importer: BYD do Brasil

Address: Av. Antonio Boscato, 230 Terminal Intermodal de Cargas – TIC, CEP 13069-119 CAMPINAS - SP

Tel: +55193514-2551

E-mail: FORKLIFTSERVICE@BYD.COM

Importer: BYD Japan company Limited

Address: The fifth Yasuda Bldg.5F,2-20-3 Tsuya-cho, Kanagawa-ku, Yokohama-shi,Kanagawa-ken,221-0835,Janpan

Tel: 045-290-6550; 045-290-6616 **Fax:** 81-(0)45-319-1506

Importer: BYD Auto Industry Company Limited

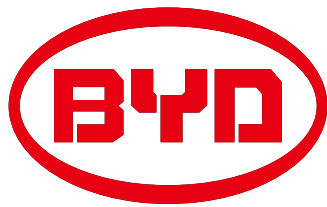
Address: No.3009, BYD Road, Pingshan, Shenzhen, 518118, P.R.China

Tel: +86-755-89888888 **Fax:** +86-755-84202222

Manufacturer: BYD (SHAOGUAN) CO.,LTD.

Address:No.1, BYD Road, Zhenjiang Industrial Zone, Shaoguan, Guangdong, 512040, P.R.China

Tel:+86-751-810 8888



Build Your Dreams

成就梦想